



PALM OIL INDUSTRY CONVEYOR AND ELEVATOR CHAINS

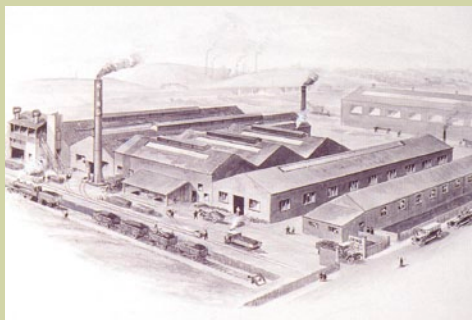


CLIMA+
Linking you to EXCELLENCE since 1926

JOHN KING



JOHN KING & COMPANY



Climax Works 1930's



Chain Assembly 1960's



New Climax Works 2000's

Company History and Qualifications

The John King Company was established in Leeds, England in 1926. Early success was achieved in the manufacture of mechanical handling equipment for the rapid mechanisation of the coal industry. In these early days conveyor chain was generally of cast link construction. The Company therefore has unrivalled experience in the production of highest quality cast link chains in ductile irons and steel under the "Climax Quality Brand". JOHN KING are undoubtedly the world leaders in this range of conveying chains.

Although cast link chains remain an important part of the JOHN KING programme, the company has progressively expanded the product range to encompass chains of other constructions and manufacturing techniques including Welded steel chains, engineered steel chains, forged fork link chains and Engineering plastic chains.

Today JOHN KING offer the widest range of conveyor chains of any manufacturer which makes them unique in being able to offer an infinite number of chain types in a variety of materials and constructions for a multiplicity of industry mechanical handling applications.

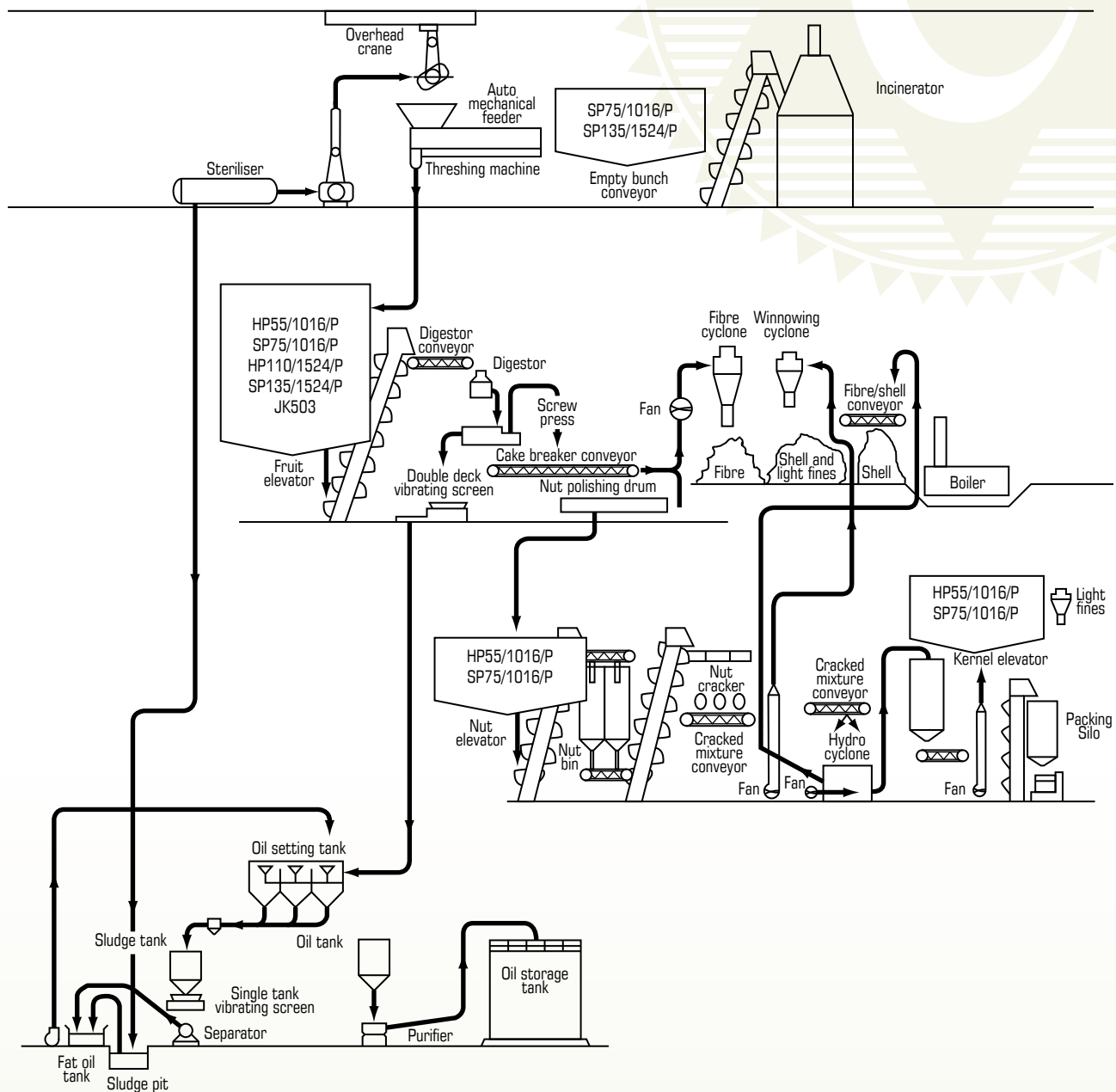
In recent years it has been JOHN KING's strategy to develop the Company into a global business. This has seen the establishment, in addition to the main factory in England, distribution Companies in North and South America, Africa, South East Asia and Central Europe. Our objective is to provide best service in supply of high quality chain and sprockets Worldwide.

All products are manufactured within the dictates of the Company's quality management according to ISO 9000 establishing consistent and high quality products and ensuring performance reliability and extended service life.

CONTENTS

Typical process layout highlighting standard applications **03** | Palm Oil Mill BS4116 Solid and Hollow Pin Conveyor Chains **04** | Palm Oil Mill Chain BS K attachments (Integral) **05** | Palm Oil Mill Chain BS K attachments (Welded) **05** | Palm Oil Mill Cast Gray Pin Chain **06** | Palm Oil Mill Cast Gray Pin Chain with K1 attachment **06** | Palm Oil Mill Cast Gray Pin Chain with K2 attachment **06** | Palm Oil Mill Cast Detachable Chain **07** | Palm Oil Mill Cast Detachable Chain with K1 attachment **07** | Palm Oil Mill Cast Detachable Chain with K2 attachment **07**

Typical process layout highlighting standard applications

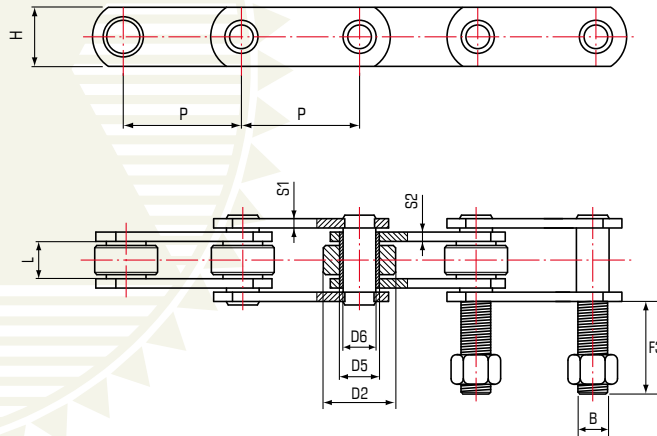


Palm Oil Industry Conveyor and Elevator Chains



Palm Oil Mill BS4116 Solid and Hollow Pin Conveyor Chains

SOLID PIN SP

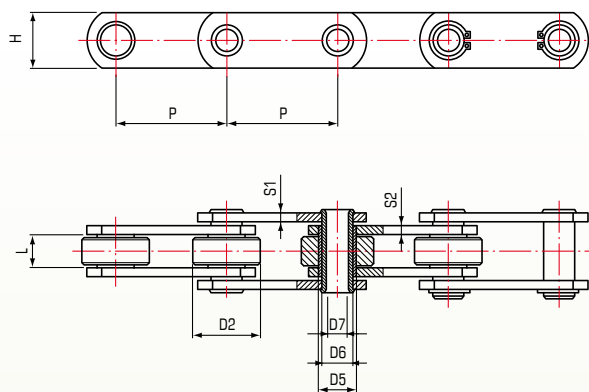


Palm Oil Mill BS Solid Pin Conveyor Chains

Chain Number	P	Breaking Load		Average Weight	Rollers	Bushings	Between Sidebars	Sidebars			Pins		
					D2	Outside Diameter		Thickness		Height	Diameter		Thread Diameter
						D5	L	S1	S2	H	D6	F3	B
	mm	kN	kN*	kg/m	mm								
SP43/0762/WP	76.2	43	70	3.83	31.75	17	15	4	4	25	14	-	-
SP43/1016/WP	101.6	43	70	3.71	31.75	17	15	4	4	25	14	-	-
SP43/1270/WP	127	43	70	3.45	31.75	17	15	4	4	25	14	-	-
SP43/1524/WP	152.4	43	70	3.29	31.75	17	15	4	4	25	14	-	-
SP75/1016/WP	101.6	75	125	7.37	47.6	23.6	19	5	4	40	19	-	-
SP75/1016/D3x4	101.6	75	125	8.05	47.6	23.6	19	5	4	40	19	40	16
SP75/1016/D3x6	101.6	75	125	7.65	47.6	23.6	19	5	4	40	19	40	16
SP135/1524/WP	152.4	135	200	13.81	66.7	33	25.4	7	5	50	26.9	-	-
SP135/1524/D3x4	152.4	135	200	14.80	66.7	33	25.4	7	5	50	26.9	50	20
SP135/1524/D3x6	152.4	135	200	14.10	66.7	33	25.4	7	5	50	26.9	50	20

* Heat treated sidebars – double strength version.

HOLLOW PIN HP

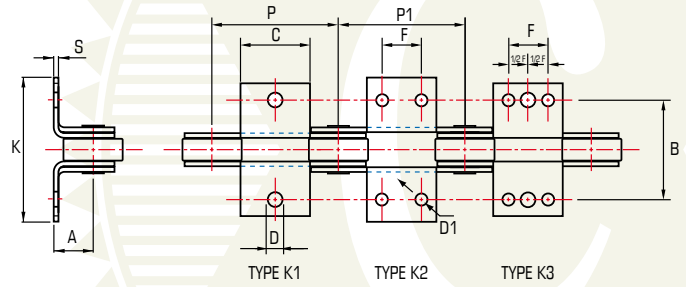


Palm Oil Mill BS Hollow Pin Conveyor Chains

Chain Number	P	Breaking Load		Average Weight	Rollers	Bushings	Hollow Pin Diameter	Between Sidebars	Sidebars			Pins		
					D2	Outside Diameter			Thickness		Height	Diameter		
						D5							D7	L
						mm			kN	kN*	kg/m	mm		
HP55/1016/WP	101.6	55	110	6.85	47.5	23.6	13.2	19	5	4	40	19		
HP110/1524/WP	152.4	110	300	12.91	66.7	33	20.2	25.4	7	5	50	26.9		

* Heat treated sidebars – double strength version.

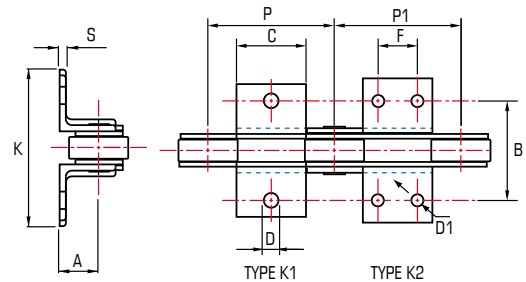
Palm Oil Mill Chain BS K attachments (Integral)



BS K Attachments Integral

Attachment minimum Outer Pitch	Attachment minimum Inner Pitch	Transverse Pitch	Centre Hole Diameter	Outer Holes Diameter	Hole Pitch	Width Over Attachment Inner/Outer	Platform Length	Platform Height	Attachment Thickness Inner/Outer	Breaking Load	Attachment Type
P	P1	B	D	D1	F	K	C	A	S		
mm										kN	
76.2	76.2	76.2	10.5	9.2	22.2	106/115	43	19.0	3.8	43	K3
101.6	101.6	-	10.5	9.2	31.8	-	64.0	-	-	-	K3
127.0	127.0	-	10.5	9.2	57.2	-	89.0	-	-	-	K3
152.4	152.4	-	10.5	9.2	57.2	-	114.0	-	-	-	K3
76.2	76.2	89.0	13.7	10.5	31.8	130/136	63.5	31.8	5.1/3.8	55	K3
101.6	101.6	-	13.7	10.5	31.8	-	63.5	-	-	75	K3
152.4	152.4	-	13.7	10.5	57.2	-	114.5	-	-	-	K3
101.6	101.6	108	15.3	-	-	146/157	56.0	38.0	7.1/5.7	110	K1
101.6	101.6	-	15.3	12.2	31.8	-	56.0	-	-	135	K2
152.4	152.4	-	15.3	12.2	57.2	-	107.0	-	-	-	K3

Palm Oil Mill Chain BS K attachments (Welded)

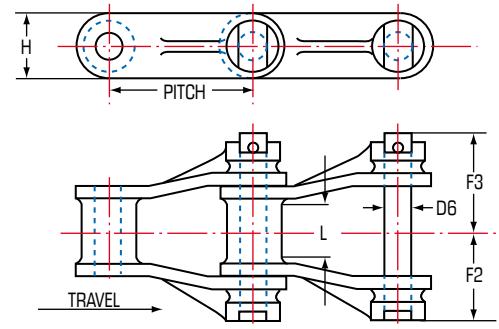


BS K Attachments Welded

Attachment minimum Outer Pitch	Attachment minimum Inner Pitch	Transverse Pitch	Centre Hole Diameter	Outer Holes Diameter	Hole Pitch	Width Over Attachment Inner/Outer	Platform Length	Platform Height	Attachment Thickness Inner/Outer	Breaking Load	Attachment Type
P	P1	B	D	D1	F	K	C	A	S		
mm										kN	
50.8	63.5	76.2	10.6	-	-	102/118	19.0	19.0	4.0	43	K1
63.5	76.2	-	10.6	-	-	-	28.0	-	-	-	K1
88.9	101.6	-	10.6	-	-	-	56.0	-	-	-	K1
88.9	101.6	-	-	9.2	31.8	-	56.0	-	-	-	K2
114.3	127.0	-	-	9.2	57.2	-	84.0	-	-	-	K2
76.2	88.9	89.0	13.7	-	-	125/136	35.0	31.8	5.0	55	K1
88.9	101.6	-	13.7	-	-	-	56.0	-	-	75	K1
88.9	101.6	-	-	10.5	31.8	-	56.0	-	-	-	K2
114.3	152.4	-	-	10.5	57.2	-	84.0	-	-	-	K2
152.4	177.8	-	-	10.5	88.9	-	127.0	-	-	-	K2
127.0	127.0	108	15.3	-	-	145/159	56.0	38.0	6.0	110	K1
127.0	127.0	-	-	12.2	31.8	-	56.0	-	-	135	K2
152.4	152.4	-	-	12.2	57.2	-	84.0	-	-	-	K2
177.8	177.8	-	-	12.2	69.9	-	108.0	-	-	-	K2
203.2	203.2	-	-	12.2	88.9	-	127.0	-	-	-	K2
228.6	228.6	-	-	12.2	133.4	-	168.0	-	-	-	K2

Palm Oil Industry Conveyor and Elevator Chains

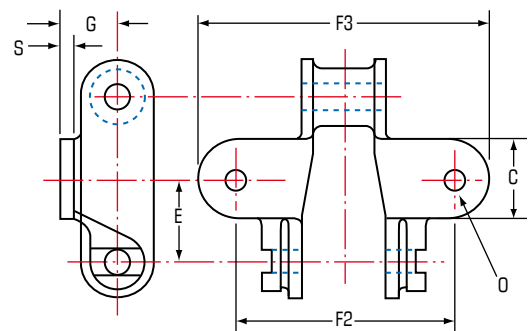
Palm Oil Mill Cast Gray Pin Chain



Palm Oil Mill Cast Gray Pin Chain

Chain Number	Average Pitch	Width		Sidebars Height	Pin Diameter	Sprocket Face	Number of Links in 10 Ft	Breaking Load	Average Weight
	P	F2	F3	H	D6	L		lbs	lbs/ft
	inches								
578	2.63	1.56	1.68	1.06	0.44	1.00	46	15,000	4.0
503	3.02	2.00	2.25	1.31	0.56	1.13	40	20,000	6.2

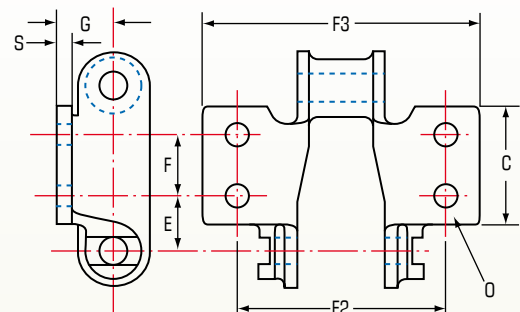
Palm Oil Mill Cast Gray Pin Chain with K1 attachment



Palm Oil Mill Cast Gray Pin Chain with K1 attachment

Chain Number	F2	F3	E	G	O	C	S
	inches						
578	3.75	5.00	1.38	0.75	0.38	1.19	0.31
503	4.44	5.69	1.50	0.88	0.44	1.50	0.25

Palm Oil Mill Cast Gray Pin Chain with K2 attachment

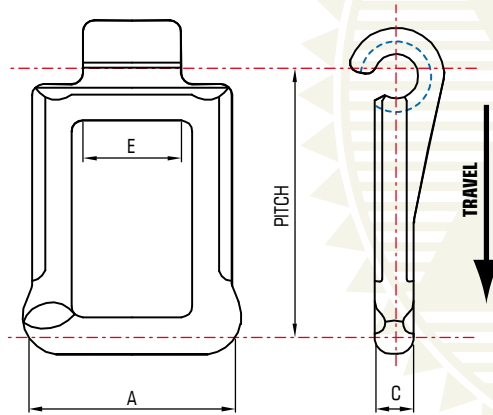


Palm Oil Mill Cast Gray Pin Chain with K2 Style A attachment

Chain Number	F2	F3	E	G	O	C	F	S
	inches							
578	4.00	5.13	0.94	0.75	0.38	2.06	1.00	0.25
503	5.38	7.00	0.88	0.88	0.44	2.88	1.81	0.25

Palm Oil Industry Conveyor and Elevator Chains

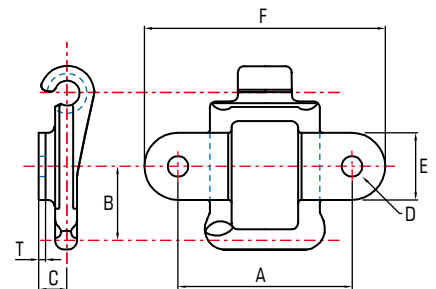
Palm Oil Mill Cast Detachable Chain



Palm Oil Mill Cast Detachable Chain

Chain Number	Style	Aprox Pitch	Width	Diameter of Crossbar	Max. Sprocket Face	No. Of Links in 10ft	Av. Ultimate Strength	Av. Nett Weight
			A	C	E			
		mm						kg
103	B	77	89	14	28	40	4,100	6.43

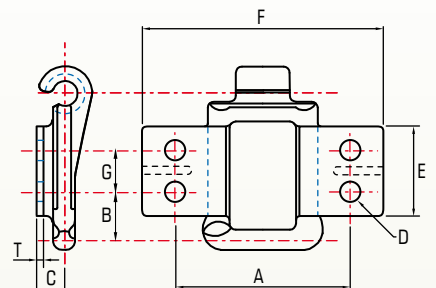
Palm Oil Mill Cast Detachable Chain with K1 attachment



Palm Oil Mill Cast Detachable Chain with K1 attachment

Chain Number	A	B	C	D	E	F	T
	mm						
103	110	38	21	11	43	141	6.35

Palm Oil Mill Cast Detachable Chain with K2 attachment



Palm Oil Mill Cast Detachable Chain with K2 attachment

Chain Number	A	B	C	D	E	F	G	T
	mm							
103	109	24	22	10	55	140	28	6.35



JOHN KING



John King Chains Limited

New Climax Works,
Lancaster Business Park,
Sherburn-in-Elmet LS25 6NS UK
Tel: (44) 1977 681 910
Fax: (44) 1977 681 899
Email: general@johnkingchains.co.uk

John King Chains (SA) (PTY) Ltd.

5 Charlie Road, Hughes
Boksburg, 1459, South Africa
Tel: (27) 11 894 3570
Fax: (27) 11 894 3501
Email: sales@jkc.co.za

John King Chains (Central Europe)

ul. Puchacza 5
89-100 Nakło nad Notecią, Poland
Tel: (48) 538 343 991
Mobile: (48) 600 871 077
Email: aw@johnkingchains.com

Cadenas John King Ltda.

Anibal Pinto 1249
Concepción
Chile
Tel: (56) 41 2214948
Email: manuel@johnkingchains.com

John King Chains (USA)

Charleston
South Carolina
United States of America
Mobile: (1) 843 998 1767
Email: ow@johnkingchains.com

John King Chains Ltd.

Rosario, Santa Fe
Argentina
Mobile: (54) 9 341 2 14 92 42
Email: sv@johnkingchains.com



FM 77342
ISO 9001

www.johnkingchains.com